

FEATURING A
THREE-NIGHT
LUXURY SAFARI
AT THORNYBUSH
GAME RESERVE



Treasures of
SOUTHERN AFRICA

CAPE TOWN  ROBBERN ISLAND  VICTORIA FALLS



A JOURNEY ON THE LUXURIOUS ROVOS RAIL



SPONSORED BY



The Association
OF FORMER STUDENTS
TEXAS A&M UNIVERSITY®

Traveling Aggies

April 1-15, 2015

800-633-7514

AggieNetwork.com/Travel



PROGRAM HIGHLIGHTS

- Explore **Cape Town**, South Africa's oldest city.
- Walk in the footsteps of Nelson Mandela on **Robben Island**.
- See the spectacular scenery and the **biodiversity of the Cape Peninsula**.
- Stalk wild animals in their native habitat during a **three-night, luxury safari**.
- Visit a youth center in **Soweto** and enjoy a lunch of traditional African cuisine.
- Enjoy incredible scenery and classic luxury during a two-night train journey aboard **Rovos Rail**.
- Feel the power of the great **Victoria Falls**.



S

outhern Africa is a historic, cultural and natural wonderland. In South Africa, Cape Town offers mountains and the sea as well as culture, history and cosmopolitan style. The city is a showcase of Cape Dutch houses and inspiring landmarks, including Robben Island and St. George's Cathedral. Soweto, once the main battleground in the war on apartheid, now offers opportunity and hope for a better future. See South Africa's magnificent wildlife at the private Thornybush Nature Reserve. In Zimbabwe, feel the rumbling of Victoria Falls, known locally as Mosi-oa-Tunya, "The Smoke that Thunders." Come discover the extraordinary treasures of southern Africa!

UNESCO

Robben Island and the **Cape Floral Region Protected Areas** in South Africa and **Victoria Falls**, Zimbabwe, are UNESCO World Heritage sites featured in this program.

*Above: View from Table Mountain
Inset: Victoria & Alfred Waterfront, Cape Town
Above right: Musician, Cape Town*



Howdy, Ags!

We invite you to join us on an exciting trip to southern Africa. Discover the spirit of Cape Town and Johannesburg, marvel at the up-close sightings of exotic, wild animals during a three-night safari, and feel the power of Victoria Falls.

Our itinerary will connect you to the vibrant people, diverse cultures, and breathtaking landscapes of southern Africa. Throughout your journey, you'll be treated to sumptuous cuisine, personalized service, and deluxe accommodations including two nights aboard the luxurious Rovos Rail.

This exclusive program combines unbeatable value with an outstanding opportunity to travel to southern Africa's most enchanting destinations. Space is limited to ensure maximum comfort, so we encourage you to make your reservation today.

Gig 'em!

Jennifer Bohac

Jennifer Bohac '87, Ph.D.
Director, Travel Programs
The Association of Former Students

Twelve Apostles, Cape Town

"We experienced a first-class trip. The Association of Former Students and AHI did a great job."

Dan '77 & Lynda Kaspar

"We went, we saw, we fell in love. It was the experience of a lifetime."

Richard '62 & Marvel Love

"Previously we have traveled independently. This trip was the first tour we have ever taken, and it exceeded our expectations. The itinerary, the staff, and the arrangements made through the Traveling Aggies were all very positive experiences."

*Wally '57 & Punky
Penberthy*

"We've always known Ags are the best. Traveling Ags know how to travel in style. We all felt as though we were pampered the entire trip."

*David '80 & Dawn
Henderson*



CAPE TOWN

SOUTH AFRICA

Sheltered by Table Mountain, South Africa’s Mother City is one of the world’s most beautiful cities. Centuries-old Cape Dutch houses and colorful gardens dot the cityscape. A bustling waterfront welcomes visitors with inviting cafés and boutiques set amid workaday harbor life. To the south, the Atlantic seaboard gives way to a scenic coastline with dramatic views.

ROBBEN ISLAND

SOUTH AFRICA

Within sight of Cape Town, but effectively a world away, Robben Island was home to a prison that held Nelson Mandela and other political dissidents. Despite poor conditions, prisoners organized debates and educational and sporting activities. From their remote prison, these prisoners helped draw attention to the injustices of apartheid. Today, former prisoners lead insightful tours of the prison.

From Prisoner to President

“What counts in life is not the mere fact that we have lived. It is what difference we have made to the lives of others that will determine the significance of the life we lead.” ~ Nelson Mandela

Activist. Freedom fighter. Prisoner. President. Nelson Mandela, who died in 2013 at the age of 95, was this and more to millions of people around the world. Jailed for 27 years during South Africa’s apartheid era, Mandela emerged from imprisonment in 1990 as the government began dismantling the apartheid machine. Four years later, Mandela was elected the first president of a new, democratic South Africa. The story of his incredible journey was introduced to a new generation of admirers in late 2013, when the man whom millions called “Tata,” father in his native isiXhosa language, died.



CAPE PENINSULA

SOUTH AFRICA

In 1580, Sir Frances Drake, the great English navigator, described the Cape of Good Hope as the “fairest cape ... in the whole circumference of the earth.” Blessed with a dramatic beauty, the peninsula is a part of the Cape Floral Region, which is considered to have the most diverse range of plant life in the world. Visitors are likely to see plenty of wildlife, especially chacma baboons. At Cape Point, ascend one of the world’s highest sea cliffs by funicular to admire stunning panoramic coastal views.



JOHANNESBURG

SOUTH AFRICA

If tranquil Cape Town is the country’s oldest and most genteel city, Johannesburg is its rambunctious little brother.

In 1886, the discovery of a huge lode of gold triggered a gold rush. Today, Joburg is the country’s financial center, and many people come here to enjoy the fast-paced lifestyle.



SOWETO

SOUTH AFRICA

Soweto, an abbreviation for South Western Townships, is no longer just a collection of shantytowns built to house black mine workers away from the center of Johannesburg. It is a thriving community proud of its role in ending the oppression of apartheid, and it produced two Nobel Peace Prize laureates: Nelson Mandela and Desmond Tutu.

Squatter camps still exist, but these camps slowly are disappearing as more affordable housing is built. With a brave spirit, the residents of Soweto are embracing both new opportunities and challenges presented to them.



VICTORIA FALLS

ZIMBABWE

Until the 19th century, the Zambezi River's great cascade was called Mosi-oa-Tunya, "the smoke that thunders," by the region's Kololo tribe. "Discovered" on November 16, 1855, by Dr. David Livingstone and renamed for England's queen, Victoria Falls is the planet's largest curtain of water—spanning more than a mile—as it crashes some 328 feet into the raging Batoka Gorge below. Twice the height of Niagara Falls, mighty Victoria Falls casts a veil of spray that at times can be seen up to 50 miles away!

The Safari Experience

In the not-so-distant past, a safari was synonymous with hunters stalking herds of big game that roamed the African plains. Today, most hunters are armed with cameras instead of guns. Their trophies? Images of Africa's incomparable wildlife.

Each day unfolds with discoveries of nature's grandeur on the wild continent. Awaken to the aroma of freshly brewed coffee as your expert driver prepares his vehicle for your early morning game drive. Set off in pursuit of exotic animals and birds in their natural habitat and see the drama of their day-to-day struggle for survival.

Return to the lodge for a hearty English breakfast and share your morning encounters with fellow travelers. After lunch, there is time to take a dip in the pool or treat yourself to a massage at the spa. Tea is served before your afternoon game drive.

As the sun completes its sojourn across the sky, return to the lodge for a relaxing evening. After a dinner of delicious international and local cuisine, gather around the fireplace to trade tales and tally your Big Five sightings. By day's end, you'll have collected many photographs and thrilling memories of your very own safari.

Thornybush

GAME RESERVE



If you've ever imagined seeing a pride of lions lazing in the sun, a lone cheetah scouting for prey or a herd of impala gracefully bounding across grassland, then embarking on a safari at the private Thornybush Nature Reserve will be a dream come true. Located near world-renowned Kruger National Park, the reserve offers incredible wildlife encounters in the most game-rich area in the country. During each game drive, ride in an open-top Land Rover with stadium seating while knowledgeable and seasoned rangers and trackers share their knowledge of the flora and fauna. Scan the savannah for the famous Big Five and the many other animals that live here. Chances are you will also see many of the 507 bird species and the 114 reptile species that reside within Thornybush's 28,417 acres of lowveld.

The Big Five

The phrase, The Big Five, was coined in the 19th century by European big-game hunters. The term refers to the most dangerous animals to track on foot and which, therefore, are the most prized trophies. They are: the lion, elephant, black rhinoceros, Cape buffalo and leopard. These magnificent creatures are still the most desired shots to stalk while on safari, but nowadays with a zoom lens mounted on a digital camera!



LION



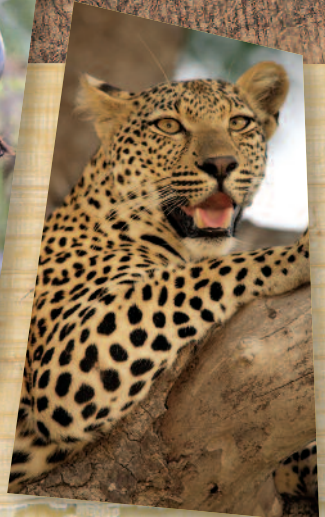
ELEPHANT



RHINOCEROS



CAPE BUFFALO



LEOPARD



ROVOS RAIL

The Pride of Africa

Discover the glamour and romance of the golden age of train travel, a bygone era, during a two-night rail journey from Cape Town to Pretoria aboard the luxurious Rovos Rail. The Pride of Africa offers an unforgettable experience.

Ride in splendid vintage carriages, painstakingly restored to mint condition and impeccably appointed. The late Victorian and Edwardian décor includes handsome wood paneling and elegantly decorated suites. Spend your days in the observation car or mingle with your fellow travelers in the lounge. Enjoy attentive service and even a touch of formality at dinner, as passengers dress for the occasion. The fine cuisine showcases local ingredients and regional specialties, with all beverages included. Each morning, take in the scenic splendor of the passing landscapes during a sumptuous breakfast buffet and dishes cooked to order. Three-course lunches and dinners include a selection of excellent South African wines.

As you make your way through the arid Karoo, step back in time as you stop in Matjiesfontein, a charming Victorian town, and Kimberley, site of the world-famous diamond mine.

Comfortable, air-conditioned accommodations include your choice of a Pullman Suite with joined twin beds or a double bed that converts to a sofa, or a Deluxe Suite with a choice of twin or double beds and a lounge area. Each suite includes a minibar, a personal safe and a private bathroom with shower and hair dryer. Room service is available at any hour.



Upper: Rovos Rail suite | Lower: Dining car

Day One Your train leaves Cape Town for Pretoria. Leave behind the mountains and the verdant vineyards of the Western Cape as you make your way to the Karoo, the semidesert plateau that encompasses much of South Africa's interior. Early this evening, arrive at Matjiesfontein, a spa town founded in the 1890 by Englishman James D. Logan, who re-created a bit of Victorian London in rural South Africa.

Day Two This morning, awake to the scenery of the Northern Cape province. Arrive in Kimberley in the afternoon and set out on a guided tour. The 1866 discovery of a diamond on a farm near Hopetown set off South Africa's great diamond rush. See the Big Hole, the former diamond mine that once was thought to be the largest hole excavated by hand.

Day Three Arrive late this morning in Pretoria. Transfer by deluxe motorcoach to Thornybush Game Reserve.

YOUR LUXURIOUS ACCOMMODATIONS



BELMOND MOUNT NELSON HOTEL | CAPE TOWN

Surrounded by beautiful gardens with a view of Table Mountain, the Mount Nelson Hotel has charmed celebrities, statesmen and other travelers for more than a century. A short stroll from the city center, the “Nellie” combines impeccably appointed rooms with world-class service. The Mount Nelson’s famous afternoon tea is a must-do for both locals and travelers alike. WiFi is available for your convenience.



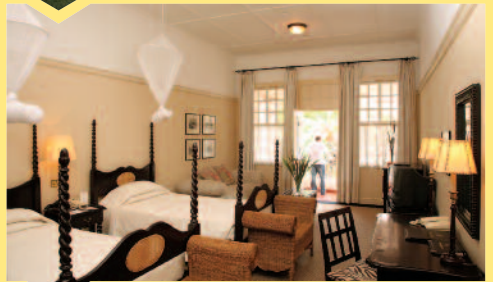
54 ON BATH | JOHANNESBURG

54 on Bath is a stylish boutique hotel. Set in the trendy suburb of Rosebank, 54 on Bath is just steps from restaurants, shops and more. Enjoy a swim in the outdoor pool. Guests also have access to a nearby fitness center. Revel in the small touches that make your stay extra special: complimentary shuttle service; use of hotel iPads; and an espresso machine in each room. WiFi is available for your convenience.



THORNYBUSH GAME LODGE | THORNYBUSH NATURE RESERVE

Thornybush Game Lodge and Nature Reserve offer luxurious accommodations and unrivaled big-game viewing. Amenities include a full spa and a swimming pool. Indulge in full English breakfasts and gourmet cuisine infused with local flavor. Air-conditioned suites are styled in rich natural textures and each features an outdoor shower and a private deck. Internet access is available in the library for your convenience.



VICTORIA FALLS HOTEL | VICTORIA FALLS

The Victoria Falls Hotel has a spectacular location beside Victoria Falls. Built in 1904 to house railway workers, “The Grand Old Lady of the Falls” features ambiance and world-class service and tropical gardens. On the terraces overlooking Victoria Falls Bridge, guests can feel the spray from the falls below. WiFi is available for your convenience.

Reserve your trip to Southern Africa, today!

Trip #: 12-21782W

Send to: The Association of Former Students
Attn: Traveling Aggies
505 George Bush Drive
College Station, TX 77840-2918
Phone: **979-845-7514** Fax: **979-845-9263**
Toll Free: **800-633-7514**

Full Legal Name (exactly as it appears on passport)

Guest 1: _____
Title First Middle Last Date of Birth

Email: _____

Guest 2: _____
Title First Middle Last Date of Birth

Email: _____

Street Address: _____

City: _____

State: _____ ZIP: _____

Home: (_____) _____ Cell: (_____) _____

Sharing room with _____ (Form sent separately.)

Name(s) you would like on your name badge(s):

(1) _____ (2) _____
Class Year Class Year

I/we authorize you to make my/our reservations as follows:

Suite category desired: Pullman _____ Deluxe _____

Land and AHI FlexAir Program

I/we reserve the Land Program and request AHI FlexAir to Cape Town, South Africa, with return from Victoria Falls, Zimbabwe, to depart from:

Departure City

- Please send me information on upgrading my flights.
- Please contact me regarding air flight options.

Land Only Program

- I/we will make my/our own air arrangements and transfers.
- I prefer single accommodations at an additional cost (limited availability).
- I request assistance in securing a roommate but will accept a single, if one is available at this time, and pay the single supplement. Should a roommate be found, I understand the supplement will no longer apply.

Reservations are subject to availability and are processed on a first come, first served basis. Reservations to be paid in full by Jan. 16, 2015 (75 days prior to departure). Reservations received after this date must be accompanied by payment in full. Final payment may be made by personal check, MasterCard, Visa or Discover. Make checks payable to AHI International.

AHI Travel has assumed all costs for the printing and distribution of this promotion. This program is exclusively arranged by AHI Travel, 8550 W. Bryn Mawr Ave., Suite 600, Chicago, IL 60631. No funds donated to The Association of Former Students or to Texas A&M University have been used in the production or mailing of this travel brochure; all such costs are covered by the tour supplier.

Enclosed is a deposit of _____ (\$600 per person required) to reserve _____ place(s).

- Accept my check made payable to **AHI International**.
- Charge my: MasterCard Visa Discover Expires _____/_____/_____

Card # _____

(Signature as it appears on credit card)

Please note: Any payment to AHI International constitutes your acceptance of the terms and conditions set out herein, including but not limited to the cancellation terms.

NOT INCLUDED-Fees for passports and, if applicable, visas, entry/departure fees; personal gratuities; laundry and dry cleaning; excursions, wines, liquors, mineral waters and meals not mentioned in this brochure under included features; travel insurance; all items of a strictly personal nature. **MOBILITY AND FITNESS TO TRAVEL**-The right is retained to decline to accept or to retain any person as a member of this trip who, in the opinion of AHI Travel is unfit for travel or whose physical or mental condition may constitute a danger to themselves or to others on the trip, subject only to the requirement that the portion of the total amount paid which corresponds to the unused services and accommodations be refunded. Passengers requiring special assistance, including without limitation those who permanently or periodically use a wheelchair, must be accompanied by someone who is fit and able to assist them, and who will be totally responsible for providing all required assistance.

AIR TRANSPORTATION-The price of air transportation offered by AHI Travel is based on Advance Purchase Excursion fares. After tickets are issued, penalties up to 100% of the ticket price may be levied. If connecting flights are requested, special promotional fares may be used, in which case penalties of as much as 100% may be assessed by the airlines if reservations are changed or canceled after ticketing. After departure, if the reservations are changed, you will be charged the higher, all year Economy class fare. **VARIATIONS TO THE GROUP ITINERARY MUST BE REQUESTED NO LATER THAN 60 DAYS PRIOR TO DEPARTURE.** Passengers who choose to make their own airline reservations independently will be wholly responsible for any airline fees or penalties incurred as a result of program cancellation and/or change in travel dates, or airline schedule(s).

BAGGAGE-Baggage restrictions vary according to the airline policy and the class of service flown. Details will be provided with your pre-departure information. Baggage allowances are subject to change by the carrier without notice. Excess baggage charges for additional or oversized/overweight pieces are expensive and not included in your trip price; plan your wardrobe accordingly. Transport of baggage and personal effects is at the owner's risk throughout the travel program.

AUTHORITY TO USE IMAGES AND AUDIO RECORDINGS- On occasion, AHI Travel obtains, from its staff, or from trip participants, photographic or video images of passengers and trip activities. By participating in this travel program, you authorize AHI Travel, without providing compensation to you, or obtaining additional approvals from you, to include photographic and video recordings of you, as well as voice recordings included with any videos, in AHI Travel's sales, marketing, advertising, publicity and/or training activities.

RESPONSIBILITY-AHI Travel and the Sponsoring Association do not own or operate any entity which provides goods or services for this program, and act only as agents for the independent suppliers of travel conveyance, transport, accommodations or other services. All such persons or entities are independent contractors. As a result, AHI Travel and the Sponsoring Association are not liable for any negligence or willful act of any such person or entity or any third person. In addition and without limitation, AHI Travel and the Sponsoring Association are not responsible for any delays, delayed departure or arrival, missed carrier connections, loss, death, damage or injury to person or property or accident, mechanical defect, failure or negligence of any nature howsoever caused in connection with any accommodations, transportation or other services or for any substitution of hotels or of common carrier equipment, with or without notice, or for any additional expenses occasioned thereby. Dates, Program Details and Tour costs, although given in good faith and based on tariffs, exchange rates and other information current at the time of printing, are subject to change at or before the time of departure. No revisions of the printed itinerary or its included features are anticipated; however, the right is reserved to make any changes, with or without notice, that might become necessary, with the mutual understanding that any additional expenses will be paid by the individual passenger. Baggage and personal effects are the sole responsibility of the owners at all times. If the entire program is canceled for any reason, participants shall have no claim other than for a full refund. By forwarding the deposit, the passenger certifies that he/she has no physical, mental or other condition of disability that would create a hazard for himself/herself or other passengers and accepts the terms of this contract set out herein and in more specific pre-departure passenger information. The airlines and other transportation companies concerned are not to be held responsible for any act, omission, or event, during the time passengers are not on board their conveyances. The passenger contract in use, when issued, shall constitute the sole contract between the company(ies) and the passenger and/or purchaser of this trip.

CANCELLATION-In addition to airline cancellation penalties, all cancellations for any reason whatsoever will be subject to a \$250 per person administrative fee. (Please note that you may choose, at the time of cancellation, to apply the withheld administrative fee to a future AHI Travel program that will operate in the current calendar year or year following.) Cancellation from 120 days to 76 days prior to departure will result in forfeiture of 10% of the entire cost of the trip per person; 75-30 days, 50% of the trip cost per person; cancellation from 29 days up to the time of departure will result in 100% forfeiture of the entire cost of the trip. **TRIP CANCELLATION INSURANCE IS AVAILABLE. AN APPLICATION WILL BE SENT AFTER YOU RESERVE.** All cancellations must be submitted in writing to AHI International Corporation.

CST Registration No. 2028271-20. Fla. Seller of Travel Reg. No. ST-33300 Iowa Seller of Travel No. 520 Ohio Seller of Travel Reg. No. 8889139.

Washington State Seller of Travel Reg. No. 601-820-871. PARTICIPATING AIRLINES-all IATA and ARC Member Carriers ©2014 AHI Travel Printed in the USA.

LAND PROGRAM

April 3-14, 2015

	Full Price	Special Savings	Special Price
B-Pullman Suite (75 sq. ft.)	\$7,245	\$250	\$6,995*
A-Deluxe Suite (120 sq. ft.)	\$8,045	\$250	\$7,795*

*Special Price valid if booked by the date found on the address panel.
VAT is an additional \$495 per person.

All prices quoted are in USD, per person, based on double occupancy (unless otherwise stated).
Single accommodations for the Pullman Suite are an additional \$2,445,
for the Deluxe Suite they are an additional \$3,740 (limited availability).

AHI FLEXAIR

April 1-15, 2015

Our personalized air program allows you to select your flights, routing, class of service and dates of travel in consultation with one of our experienced Passenger Service Representatives. Airfares will vary, depending on airline, routing and class of service. In most cases, transfers between the airport and hotel/cruise ship will be included on arrival and departure days. Your Passenger Service Representative will provide you with all of the details you need to guarantee your transfer. Book your air with us to ensure assistance in the case of schedule changes or delays that may impact your air travel plans.

ITINERARY

- Day 1** Depart Gateway City[†]
- Day 2** Arrive in Europe | Depart for Cape Town, South Africa[†]
- Day 3** Arrive Cape Town
- Day 4** Cape Town
- Day 5** Cape Town
- Day 6** Cape Town | Rovos Rail | Matjiesfontein
- Day 7** Rovos Rail | Kimberley
- Day 8** Rovos Rail | Pretoria | Thornybush Game Reserve
- Day 9** Thornybush
- Day 10** Thornybush
- Day 11** Thornybush | Johannesburg
- Day 12** Johannesburg | Victoria Falls, Zimbabwe
- Day 13** Victoria Falls
- Day 14** Victoria Falls | Transfer, flight to Johannesburg, South Africa[†] | Depart[†] for Gateway City
- Day 15** Arrive in North America

NOTE: This itinerary schedule may change due to local conditions. Many excursions in this program involve an element of walking.

[†]Provided for AHI FlexAir participants.

Right: Woman in traditional clothing, Victoria Falls

Far right: Dining alfresco at Thornybush Game Lodge



| INCLUDED FEATURES |

CAPE TOWN, SOUTH AFRICA

- **Three nights** at the deluxe **Mount Nelson Hotel**.
- See the highlights of Cape Town, including the Robben Island prison that held Nelson Mandela and other anti-apartheid activists.
- Take a cable car to the top of Table Mountain, (weather permitting).
- Take a scenic drive along the Cape Peninsula with a funicular ascent at Cape Point.
- Visit the African Penguin colony at Boulders Beach.
- Attend a lecture about South African culture and history.
- Mingle with your fellow travelers at a Welcome Reception.

ROVOS RAIL

- **Two nights** aboard the deluxe **Rovos Rail** train from Cape Town to Pretoria.
- Visit Matjiesfontein, a perfectly preserved Victorian town in the heart of the Karoo.
- Discover the history of Kimberley at the Mine Museum and the Big Hole.

THORNYBUSH NATURE RESERVE

- **Three nights** at **Thornybush Game Lodge**, a luxury safari lodge.
- Spend your mornings and afternoons on guided game drives. Morning and evening refreshments are included during each game drive.
- Attend a Thornybush Farewell Party.

JOHANNESBURG

- **One night** at **54 on Bath**, a deluxe hotel in Johannesburg.
- Tour Soweto. Visit a youth center and take part in a tree-planting ceremony.

VICTORIA FALLS, ZIMBABWE

- **Two nights** at the landmark **Victoria Falls Hotel**.
- Visit Victoria Falls National Park and discover the power of Victoria Falls.

TRANSPORTATION

- The train ride, all deluxe motor coach transfers and the two flights (Hoedspruit, South Africa, to Johannesburg and Johannesburg to Victoria Falls, Zimbabwe) in the Land Program itinerary and baggage handling on these transfers are included.



MEALS

- Enjoy 11 breakfasts, seven lunches and six dinners; tea or coffee with all meals, plus wine with dinner.
- Sample authentic regional specialties during select meals at featured local restaurants.
- Take advantage of leisure time to try the local cuisine independently.

MANY INCLUDED EXTRAS

- Tipping of guides and drivers on included excursions.
- Consultation services of a **Passenger Service Representative** prior to departure.
- Services of a professional **Travel Director** throughout your stay.
- Detailed destination and travel information to assist in your planning.
- Complimentary travel wallet.

Chobe National Park Optional Excursion

Available at an additional cost

There is no better place to see elephants than Chobe National Park. Renowned for its African elephants present during all seasons, Chobe's tuskers number around 120,000 and are part of what is possibly the largest surviving continuous population of the species. The second largest national park in Botswana, Chobe encompasses four distinct ecosystems and is home to one of the most diverse concentrations of game and birds found on the African continent. This excursion is offered when the group is in Victoria Falls, Zimbabwe.



Presorted Std.
U.S. Postage
Paid
AHI Travel



Top to bottom:
Enjoying a game drive
Protea, South Africa's national flower
Cape Peninsula
Victoria Falls
Cover photos:
Lion on the savannah
Cape Town



A word about your Tour Operator

AHI Travel is the premier operator of deluxe travel programs sponsored by alumni associations. Their experienced, professional staff has offered the highest level of service in **innovative travel programs since 1962.**

In AHI Travel's care, you can rely on:

- **An exceptional travel value.** It would be impossible for an independent traveler to arrange all these unique experiences, inclusions and services at a comparable price.
- **Unique access to local sites.** Take advantage of over 50 years of travel experience to gain preferred entrance to popular sites and to uncover the region's hidden treasures.
- **Experienced Travel Directors** who attend to every detail of your journey.
- **Expertise of local guides** who possess authoritative knowledge of the region and offer personal insight into local culture.
- **Flexibility and customization.** Free time during the trip allows you to pursue your own interests. They will also help you tailor your dream trip with add-ons and extensions.
- **Safety and security.** In a country where you might not know the language or culture, their professional staff is on hand to ease your way and get you any help you need.



The Association of Former Students
Attn: Traveling Aggies
505 George Bush Drive
College Station, TX 77840-2918
SAFRICA1537

Please call or refer to our website for the most current program information, discounts and pricing.

 Like us at [facebook.com/ahitravel](https://www.facebook.com/ahitravel)

 Follow us on Twitter @ahitravel

 View our webinars at [youtube.com/ahitravel](https://www.youtube.com/ahitravel)