

OBR

Polar Bears of Churchill

A 6-Day Expedition to the Polar Bear Capital of the World

NOVEMBER 07, 2015 – NOVEMBER 12, 2015

POLAR BEARS OF CHURCHILL

Much like the bears themselves, visitors make their way to Churchill each fall when temperatures drop, brimming with anticipation. The reward: experiences of a lifetime. On this wildlife expedition, surrounded by experts and featuring up-close experiences, be part of an extraordinary natural phenomenon and unforgettable adventure.



Howdy, Ags!

We are thrilled to present you with a special opportunity to witness one of the largest confluences of polar bears in the world. During this six-day journey to remote Churchill, Manitoba, it is possible to observe polar bears interact and play from a custom designed Tundra Buggy®. The quality guidance of a naturalist Orbridge Expedition Leader and exclusive educational experiences distinguish this program, including expert presentations from Churchill Northern Studies Centre, Polar Bears International, Manitoba Museum, the Eskimo Museum, and Parks Canada.

Our rates for Traveling Aggies guests on this departure represent a significant savings (more than \$1,400 per couple) over that of non-affiliated guests, so be certain to reserve your spot today—online at <http://texas-am.orbridge.com>, by phone at (800) 633-7514, or by returning the enclosed reservation form—and to share this brochure with friends who may be interested in traveling with you!

Gig 'em,

Jennifer Bohac

Jennifer Bohac '87 Ph.D.
Director of Travel

Please note: The information contained in this document is current as of 10/13/2014

Program Highlights:

- * Begin with a private reception and five-course welcome dinner at the Manitoba Museum along with a presentation on **Hudson Bay history**.
- * Learn about Churchill's unique ecosystem at the **Northern Churchill Studies Centre**.
- * Enjoy **two expeditions aboard a custom-designed Tundra Buggy®** to view the polar bears in their natural environment with an Orbridge Expedition Leader. A **Polar Bears International** Field Ambassador will join you on one of the Tundra excursions.
- * Hear tales of arctic racing and **experience dog sledding** for yourself on boreal forest trails.
- * Discover the cultural history of this region during a guided tour through the **Eskimo Museum** and a talk with a Parks Canada ranger.
- * **What's Included:** all meals, all gratuities, all excursion transportation and entry fees; full guiding services, and five nights accommodations.



Day-by-Day Itinerary*:

Day 1: Arrive Winnipeg

Welcome to Canada! Join with fellow travelers for a warm welcome, then step out for a special evening of Hudson Bay history at the Manitoba Museum. Surrounded by historic artifacts, a private reception, presentation, and five-course welcome dinner in this award-winning heritage center will be a magical and educational beginning.

Overnight: Sheraton Four Points Hotel (R,D)

Day 2: Winnipeg / Churchill / Northern Churchill Studies Centre

Arrive in Churchill after an early morning flight from Winnipeg and head to Northern Churchill Studies Centre, getting acquainted with the town along the way. At the Centre, an informative introduction to this unique

ecosystem and environmental research currently underway will shed light on the significance of your surroundings. Later, enjoy a talk with a Parks Canada park ranger, gain a broader perspective of this area's natural reserves, wildlife populations, and important sites like Prince of Wales Fort, Cape Merry, and Sand Wapusk National Park which protects the inland denning area of the polar bear.

Overnight: Churchill Accommodations (B,L,D)

Day 3: Churchill – Tundra Buggy® Excursion

Grab your camera, board your expedition vehicle, and head out onto stark and beautiful landscapes, stopping to enjoy the scenery and search for wildlife. Today we are joined by a Polar Bears International Field Ambassador contributing expert perspectives on the bears' behavior, survival, and habitat—as well as international conservation programs.

Overnight: Churchill Accommodations (B,L,D)

Day 4: Churchill – Dog Sledding / Eskimo Museum

Meet an energetic team of huskies and their experienced handler. Learn about these industrious animals and the important role they have played in the heritage of this remote region. Then, bundle in for an exciting dog sled experience yourself. After lunch, visit Churchill's Eskimo Museum for a docent-led tour detailing indigenous ways of life while surrounded by more than 850 Inuit carvings, sculptures of stone, bone, and ivory, archaeological finds, and wildlife specimens.

Overnight: Churchill Accommodations (B,L,D)

Day 5: Churchill – Tundra Buggy Excursion / Winnipeg

Today we have our second opportunity to observe and photograph the Great White Bear. Take advantage of the Tundra Buggy's open-air platform and large windows to enjoy a wide view of the area. Participate in field presentations and interpretation by your Orbridge Expedition Leader. If lucky, perhaps catch sight of the arctic hare, snowy owl, ptarmigan, or even an arctic fox living in this rugged area. This evening, depart the inimitable tundra for your flight to Winnipeg.

Overnight: Sheraton Four Points Hotel (B,L,D aloft)

Day 6: Depart Winnipeg

Enjoy breakfast, then bid a fond farewell to the North and head to the airport for your flight home. (B)

**Itinerary subject to change.*

**Itinerary subject to change*

What's Included:

- ✦ Five nights ideally-situated and comfortable accommodations
- ✦ All meals—5 breakfasts, 4 lunches, and 5 dinners—including a special welcome reception and dinner
- ✦ Full guiding services and specialized interpretation of a naturalist Orbridge Expedition Leader
- ✦ In-depth educational program with informative presentations and exclusive small-group experiences throughout
- ✦ All gratuities, park and entry fees, and all excursion transportation

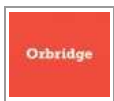


The Tundra Buggy Experience

The Tundra Buggy—the original polar bear expedition vehicle—is part of your adventure. Built for security and all terrain, the tires alone on this spartan rig are 5.5 feet high. Its wide-bodied enclosure contains cushioned seats, windows that open, and an observation deck for even more viewing angles.

Your Guide(s):

Orbridge Expedition Leader



Every departure will be accompanied by a premier Expedition Leader with extensive local knowledge and experience as a cultural, historic, and naturalist interpreter. With their contribution of exceptional know-how and enthusiasm adding depth to your experience, enjoy the cultures and locations you explore with added confidence, understanding, and appreciation.

Program Accommodations:



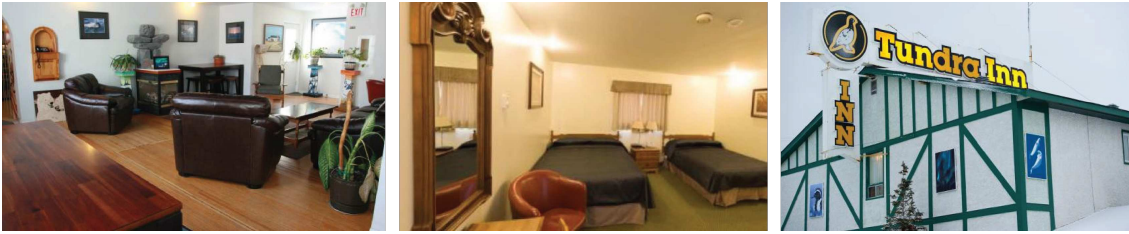
Winnipeg: Sheraton Four Points Hotel (or similar)

Overnight in Winnipeg's only hotel adjacent to the brand new Winnipeg James Armstrong Richardson International Airport. The full-service hotel offers a restaurant and lounge where guests can meet and relax, a fitness center, and fully-appointed guest rooms.

Room Amenities: Climate control, cable TV, complimentary wireless internet access, tea and coffee-making facilities, bathroom sundries and hair dryer.

Churchill Accommodations

In Churchill, guests will either stay at The Tundra Inn, The Aurora Inn, or Polar Inn, all simple, comfortable and similar in quality and convenience. Please note this program journeys to a remote region where facilities are limited. We have selected the best available hotels that satisfy our standards of comfort.



Churchill: The Tundra Inn

Located on a quiet side street in the northern part of town, the family-run Tundra Inn features spacious accommodations, a restaurant, bar and lounge, and cafe.

Room Amenities: Cable TV, complimentary wireless internet access, phone, refrigerator, coffee-making facilities, and hair dryer.



Churchill: The Aurora Inn

The Aurora Inn is a simple, comfortable property featuring spacious, two-story suites with bedroom lofts. It's conveniently located just steps from Churchill's restaurants, bars, and shopping.

Room Amenities: TV with VCR, complimentary wireless internet access, and fully-equipped kitchen with tea and coffee-making facilities.



Churchill: The Polar Inn

The Polar Inn is located near the shores of the Hudson Bay and the town center.

Room Amenities: TV, wireless internet access, phone, tea and coffee-making facilities, bathroom sundries and hair dryer.

Activity Level:

Easy

Activities are generally not very strenuous and walking is at a fairly slow pace in order to observe and learn as much as possible. **Our expectation is that guests on this program are able to walk on uneven surfaces, icy, snow-covered ground, and stairs without assistance.**

What They're Saying:

"Everyone should take the time to enjoy the nature and serenity of Northern Manitoba."

—Julia K., San Antonio, TX

"All in all, we can't imagine how this trip could have been any better—a most memorable experience!"

—Mary Sue and Herb W., Tulsa, OK

"I can't speak highly enough of the program choices and the people involved in education and field work. Many people praised the museum lecturer, the enthusiasm of the people at the research centre, the constant efforts of our guide to keep us informed, and the awesome people who make the tundra buggy experience so memorable."

—Nancy J., Tempe, AZ

"The whole trip far exceeded our expectations and we travel a lot! Seeing the polar bears, arctic fox and other wildlife in their native habitat was so gratifying. This was on my "bucket list" and we are so happy that we were able to participate."

—Bill & Kay L., Manhattan, KS



Program Rates*
 \$5,295 per person
 plus \$995 internal airfare

Reservation Form

Polar Bears of Churchill

NOVEMBER 07, 2015 — NOVEMBER 12, 2015

- Option 1:** Reserve online now at <http://texas-am.orbridge.com>, or call (800) 633-7514.
- Option 2:** Secure your reservation with a deposit charged to the credit card below, or with the enclosed check payable to: Orbridge LLC.

Guest Information:

Guest #1 (as printed on passport): _____ Class Year _____

Guest #2 (as printed on passport): _____ Class Year _____

Guest #1 (preferred on name badge): _____

Guest #2 (preferred on name badge): _____

Address: _____

City: _____ State: _____ ZIP: _____

Email: _____ Phone: _____ Alt. Phone: _____

Cabin Preference (if applicable): 1st choice _____ 2nd choice _____

Payment:

Card type: MasterCard Visa American Express Discover Check enclosed

Card #: _____ Exp. date: _____ CVV: _____

Name (as printed on card): _____

Billing address (if different than above): _____

City: _____ State: _____ ZIP: _____

(#) _____ guests joining program (\$850/person) +

(#) _____ guests joining extension (\$500/person if applicable) = Total deposit: \$ _____

I/we have read, understand, and agree to the full Terms & Conditions at <http://terms.orbridge.com> and detailed in program documents; and that Orbridge LLC is authorized to charge my credit card above and/or take my/our deposit for this program.

Signature: _____ Date: _____

Send or fax reservation form and deposit to:

Traveling Aggies, The Association of Former Students
 505 George Bush Drive College Station, TX 77840
 Fax: (979) 845-9263

*Discounted group rate; limited offer. Rate is per person based on double occupancy, in U.S. dollars. Airfare not included. Single reservations are \$7,295; availability limited. Group airfare for the charter flight between Winnipeg and Churchill is charged additionally at \$995 per person.

Terms & Conditions

ORBRIDGE TERMS AND CONDITIONS

These Travel Guest Terms and Conditions ("Agreement") apply to and control any travel services offered by or through Orbridge LLC or any of its Affiliates (together and in the alternative, "Orbridge", "we", "us", "our"). For purposes of this Agreement, the term "Affiliates" means any natural person or legal entity that is controlled by, controls, or is under common control with Orbridge. "Control" means the ability, whether directly or indirectly, to direct the affairs of Orbridge by means of ownership, contract, employment relationship or otherwise. "You" and "your" means each program participant.

Rates. Program rates are based on minimum participation levels, current fares (air, water, land), tariffs and currency values. While Orbridge does everything possible to maintain the listed program rates, they are subject to change effective immediately upon posting unless otherwise specified by Orbridge.

Registration, Deposits and Final Payment. To confirm and secure your reservation, a deposit of \$850 per person per program and \$500 per person per extension, and any non-refundable deposits are due at the time of registration payable by check, ACH, money order, wire transfer of same day US funds, or major credit card. Final payment including any extension(s) and optionals is payable by check, money order, ACH or wire transfer of same day US funds ONLY and due no later than 90 days prior to the scheduled program departure date. If your reservation is made fewer than 90 days prior to departure, the entire cost of the program, plus any extension and optionals, is due at the time of registration by check, money order, ACH or wire transfer of same day US funds ONLY. If final payment is not received by Orbridge at least 90 days prior to the scheduled program departure date, (a) the reservation is subject to a late payment fee equal to 2% (or the maximum legal rate, if less) of the total invoice amount, per week until paid in full, and (b) Orbridge may, at any time and with or without notice, cancel your reservation in its sole and absolute discretion. All payments we receive from you are herein defined as "Payments".

Reservation Grace Period.

Reservations made not fewer than 98 calendar days prior to the scheduled program departure date may be cancelled at any time during the seven (7) calendar day period (the "Grace Period") immediately following the date of reservation for a full refund of all Payments received by Orbridge as of the effective date of termination. Notice of termination must be in writing, must be received by Orbridge in the Grace Period and is effective only on timely receipt of such written notice by Orbridge. For all other reservations and cancellations, the terms of the Cancellations and Refunds section below apply.

Cancellations and Refunds. All cancellations must be submitted to Orbridge in writing and will be subject to a cancellation fee ("Cancellation Fee") as follows: (a) if the cancellation notice is received by Orbridge 151 or more days prior to the scheduled departure date, the Cancellation Fee will be \$500 per person per program and \$300 per person per program for any extension; (b) if the cancellation notice is received by Orbridge between 150 and 91 days prior to the scheduled departure date the Cancellation Fee will be forfeiture of the full deposit per person per program including any extension; (c) if the cancellation notice is received by Orbridge 90 or fewer days prior to the scheduled departure date, the Cancellation Fee will be the full program price. In addition to and not in lieu of the foregoing, a Cancellation Fee equal to 100% of the carrier charge applies to all non-refundable airfares due to your cancellation made at any time prior to the scheduled program departure date, as applicable. Refunds, if any, of any Payments in excess of the aggregate Cancellation Fee shall be processed within 30 calendar days of our receipt of your written notice.

Travel Insurance: Orbridge strongly recommends that you purchase travel and cancellation insurance to protect your interests in the event unexpected or unforeseen circumstances, including without limitation, force majeure events, cause the cancellation of your trip. In addition, we recommend that you consider obtaining a policy(ies) that will cover some or all of your losses associated with damage or loss of luggage or personal effects. If you do not have, but are interested in, purchasing travel and cancellation insurance please contact us immediately.

Cancelled Programs. All programs are subject to cancellation by Orbridge prior to the scheduled departure date for any reason including without limitation, and in our sole reasonable judgment, insufficient participation, logistical problems that may impede program operations or represent conditions or events that may expose program guests and/or Orbridge to undue risk of harm, injury, damage or inconvenience. In the event of program cancellation by Orbridge for any reason whatsoever within the 30-day period immediately preceding the program start date, Orbridge shall have no obligation to refund any Payments received by Orbridge as of the date of cancellation. In the event of program cancellation by Orbridge at any time before the 30-day period immediately preceding the program start date for any reason whatsoever other than a force majeure event, your sole and exclusive remedy shall be (a) refund of such Payments received and held by Orbridge as of the date of cancellation that have not already been advanced to suppliers, and (b) for Payments received by Orbridge that have been advanced to suppliers, Orbridge shall have no refund obligation but may, in its sole discretion, undertake commercially reasonable efforts (exclusive of litigation) to obtain a refund or reimbursement of such advanced payments from the subject suppliers. For those advanced funds that Orbridge is able to subsequently recover, Orbridge may, at its sole discretion, refund the advanced payments, less the cost of recovery to program guests. Orbridge makes substantial payments to its suppliers (hotels, transportation companies, etc.) far in advance of the scheduled program departure date. Accordingly, if a program is cancelled due to a force majeure event (as defined below), you shall promptly submit an appropriate claim with your travel and/or cancellation insurance carrier and Orbridge may, but is not obligated to, undertake commercially reasonable efforts to refund the portion of any Payments received by Orbridge as of the date of cancellation that have not already been advanced to suppliers. In addition, at Orbridge's sole discretion may elect to use commercially reasonable efforts to recover and refund to you any Payments advanced to suppliers, less the costs of recovery, limited to such amounts not covered by trip or cancellation insurance. However, you acknowledge and agree that (a) Orbridge has no obligation to recover or refund all or any portion of Payments advanced to suppliers, (b) commercially reasonable recovery efforts under this Section shall not include or require, and shall be fully satisfied and performed exclusive of, any legal proceedings by or on behalf of Orbridge in any forum, venue or jurisdiction whatsoever, (c) your primary source of recovery of any Payments made by you in the event of program cancellation due to a force majeure event shall be your travel and/or cancellation insurance proceeds, and (d) notwithstanding any provision in these Terms & Conditions or other documents to the contrary, Orbridge shall have no obligation to recover or refund to you any Payments or other amounts to the extent they have or will be satisfied by or through insurance proceeds. Orbridge is not responsible for, and you hereby release and forever discharge Orbridge from, any expense or cost incurred by you in preparing for or arising or resulting from a cancelled program, including without limitation, the cost of non-refundable airfare, other transportation, lodging and meal expense, visa fees, medical expenses, equipment and clothing purchases, insurance premiums and deductibles and the cost of any additional or alternative arrangements you elect or are required to incur or make as a result of a cancelled program.

Itineraries. Accommodations and arranged excursions are subject to change or substitution at any time due to unforeseen circumstances or circumstances beyond Orbridge's control. Every reasonable effort will be made to operate programs as planned, but adjustments, substitutions and changes may occur after the final itinerary has been issued. Orbridge may, in its sole discretion, withdraw a program or any part of it, make such alterations or substitutions to the itinerary or program inclusions as it deems necessary or desirable, and pass on to program participants any expenditures, additional costs or losses caused by any such adjustments, or by delays or events beyond its reasonable control. In addition, Orbridge may, in its sole discretion, withdraw or modify a program if required by the tour operator or other vendor with whom Orbridge has contracted or by applicable governmental authority.

Not Included. Unless otherwise specifically noted in the itinerary, program prices do not include the following expenses, which if applicable are your sole responsibility to pay and satisfy: trip cancellation insurance and passenger travel protection plan; domestic, international, and internal airfares; transfers and luggage handling fees except in connection with scheduled group flights; costs associated with obtaining passports or entry visas; airport departure taxes; airline ticketing fees; airport transfers when arriving/departing on other than scheduled group dates; excess baggage charges; any new value added taxes or GST taxes added to program costs by applicable governmental authority; gratuities to drivers, guides, or ship's crew not specified; meals and beverages other than those specified as being included in the itinerary; sightseeing not included in the itinerary; personal expenses such as laundry, communication charges and optional activities (which are subject to availability); and ship, air, or transportation fuel surcharges, if applicable.

Health and Fitness to Travel. Some programs include physically active elements. To enjoy the program as intended, a minimum level of fitness is required. Accordingly, you must be in good physical and mental condition to participate. You represent and warrant to Orbridge that you have no physical, mental or other condition, impairment or disability that may or will cause or create a risk of injury or other hazard to yourself or others in respect to any aspect of the program you have selected. Orbridge may, in its sole discretion, limit, restrict or prohibit from participation in any aspect of any program any individual that it considers in its sole discretion to be impaired or unsuitable due to fitness level. In addition, Orbridge may, in its sole discretion and at the participant's sole expense, remove from the program, or restrict the program-related activities of, any individual whose physical or mental condition may or is likely to cause a hazard to himself/herself or others, or otherwise impair the enjoyment of other program participants. Any physical condition requiring special attention, diet, or treatment must be reported in writing to Orbridge at the time a program reservation is made. Should you have any questions or need any clarification about a specific program, please ask for details at the time of agree that nothing in this Section creates any obligation or duty on the part of Orbridge to monitor, to make any decision or determination or to take any action in respect to any program participant on account of such individual's mental or physical condition, health or otherwise.

Travel Advisories and Warnings. It is the sole responsibility of each guest to stay informed about the most current international travel advisories and warnings by visiting the U. S. State Department's travel website at <http://www.travel.state.gov> or by contacting the U.S. State Department directly. In the event of an active State Department Travel Warning ("Warning") against travel to a program's specific destination location(s) and you elect to travel to the location(s) notwithstanding such Warning, you hereby agree, individually and on behalf of your marital community, heirs, estates, personal representatives, executors and assigns, to assume, and to defend, indemnify and hold Orbridge harmless from and against, all actual or potential personal injuries, death, property damage and other loss or casualty arising from or related to events that are the same or similar to those specified in the Warning.

Children. Orbridge welcomes the participation of children in its programs. However, in the event you do include your children or other minors for whom you serve as legal guardian (together, "Dependents") in your travel plans, you hereby acknowledge and agree that you are and shall be at all times solely responsible for their care, actions, safety and protection during the program and any extension(s). Should you have any questions whether a particular program or inclusion is suitable for your Dependent(s), please contact us and we will do our best to provide you with answers.

Baggage. Program rates include the price of two (2) pieces of policy-compliant baggage per person during the land or cruise portion of the program only unless specified in the itinerary. Please be advised that air carriers often impose restrictions or limitations on the number of pieces, size and weight of luggage and may reject or impose additional fees on luggage exceeding such limitations or restrictions. All such fees are your sole cost and responsibility. In addition and regardless of location or transportation method, your baggage and personal effects are and shall at all times be at your sole responsibility and risk throughout the entire program. Please check with your international carrier for other baggage restrictions and limitations applicable to international flights.

Travel Documents. For U.S. citizens, valid passports are required for travel to foreign destinations and some countries require specific visas prior to entry. Please direct any questions in respect to visa requirements to Orbridge, which shall use commercially reasonable efforts to provide answers as a courtesy, provided that it shall remain your sole responsibility and obligation to

obtain and verify that you have all required travel documents, including visas, for your nationality necessary and appropriate for the program location(s) and sufficient blank pages in your passport for visas and immigration stamps. Orbridge is not liable, and expressly disclaims all such liability, for any expenses or costs you may incur due to your prohibition or restriction from entering a country on the program itinerary or reentering the United States at the conclusion of the program.

Photos and Videos. Orbridge and its representatives may, from time to time, make photographic or video recording(s) during a program, which may include images of you and/or your Dependent(s) (if any). For and in consideration of the benefits you enjoy and receive in connection with the program, you, individually and on behalf your Dependent(s), hereby agree and grant to Orbridge a limited, non-exclusive, irrevocable, worldwide, perpetual, royalty-free right, license and release, with right to sublicense, to exhibit, publish, display, and promote the photographs, images, visual depictions, and reproductions of you (together "Photos") recorded in digital or other format during the program for use by Orbridge for the limited purpose of promoting and marketing the services of Orbridge in such manner as Orbridge may elect in its sole discretion. Without limiting the generality of the foregoing, the license granted herein includes the right, without limitation, for Orbridge to reproduce the Photos in digital or other form, to edit such materials, and to publically display, publish and/or distribute such reproductions on Orbridge's proprietary website ("Website") and in such other digital media and print materials as Orbridge may elect.

Data Rights and Permissions. Data collected and/or derived by Orbridge resulting from your use of the Website is the sole and exclusive property of Orbridge and may be used in any manner consistent with the Privacy Policy. By submitting to Orbridge a digital or hard copy form that includes your personal contact information, including without limitation, your email address and telephone number(s), you give Orbridge and any other entity identified on the form express written permission to use that information to contact you and as otherwise may be described on the form and/or in the Privacy Policy.

Arbitration. Any controversy or claim arising out of or relating to any services or products offered or obtained through Orbridge, including without limitation, any claim related to bodily injury, death or property damage, shall be adjudicated and conclusively settled and resolved by binding arbitration in Seattle, Washington before a single arbitrator reasonably knowledgeable in travel services matters selected by Orbridge in its sole reasonable discretion in accordance with the rules of the American Arbitration Association then existing, and judgment on the arbitration award may be entered in any court having jurisdiction over the subject matter of the controversy.

Limitation of Liability. NONE OF (A) ORBRIDGE, (B) THE SPONSORING ENTITIES FOR WHOM ORBRIDGE DESIGNS PROGRAMS, OR (C) ANY OF THEIR RESPECTIVE EMPLOYEES, MEMBERS, MANAGERS, SHAREHOLDERS, OFFICERS OR DIRECTORS (COLLECTIVELY, THE "ORBRIDGE GROUP") OWN OR OPERATE ANY ENTITY THAT DOES OR WILL PROVIDE GOODS OR SERVICES FOR OR IN CONNECTION WITH YOUR PROGRAM. ORBRIDGE PURCHASES, WITHOUT LIMITATION, TRANSPORTATION, HOTEL AND OTHER LODGING ACCOMMODATIONS, FOOD, GROUND HANDLING AND OTHER SERVICES (TOGETHER "VENDOR SERVICES") FROM VARIOUS THIRD-PARTY SUPPLIERS ("VENDORS"), ALL OF WHOM ARE INDEPENDENT CONTRACTORS AND OVER WHOM THE ORBRIDGE GROUP HAS NO RIGHT OF CONTROL OR AUTHORITY. THE VENDOR SERVICES ARE PROVIDED "AS IS" WITHOUT WARRANTY OF ANY KIND BY THE ORBRIDGE GROUP. EXCEPT AS EXPRESSLY PROVIDED ABOVE, THE ORBRIDGE GROUP MAKES NO WARRANTIES OF ANY KIND WITH RESPECT TO THE PROGRAM, WHETHER EXPRESS OR IMPLIED, INCLUDING ANY IMPLIED WARRANTIES OF MERCHANTABILITY AND FITNESS FOR A PARTICULAR PURPOSE. THE ORBRIDGE GROUP SHALL NOT BE LIABLE FOR THE ACTS OR OMISSIONS OF ANY VENDOR OR OTHER THIRD PARTY, INCLUDING WITHOUT LIMITATION, ANY DAMAGE, DEATH, LOSS OR INJURY TO PERSON OR PROPERTY CAUSED, IN WHOLE OR IN PART, BY ANY VENDOR OR OTHER THIRD PARTY, NOR THE STANDARD OF CARE YOU RECEIVE IN CONNECTION WITH THE VENDOR SERVICES. IN NO EVENT SHALL THE ORBRIDGE GROUP BE LIABLE FOR ANY INDIRECT, INCIDENTAL, CONSEQUENTIAL, SPECIAL, PUNITIVE OR EXEMPLARY DAMAGES, INCLUDING, BUT NOT LIMITED TO, LOSS OF WAGES, SAVINGS OR CONSORTIUM, EVEN IF SUCH DAMAGES ARE FORESEEABLE AND WHETHER OR NOT THE ORBRIDGE GROUP HAS BEEN ADVISED OF THE POSSIBILITY THEREOF. THE ORBRIDGE GROUP'S MAXIMUM AGGREGATE LIABILITY, WHETHER ARISING IN TORT, EQUITY, LAW OR CONTRACT, SHALL NOT EXCEED THE TOTAL AMOUNT PAID OR PAYABLE BY YOU TO ORBRIDGE IN CONNECTION WITH THE PROGRAM AT ISSUE. The limitations set forth in this Section shall not apply where prohibited by law, but instead shall be interpreted to give effect and enforced to the maximum allowable extent.

Force Majeure. In addition and without limitation, Orbridge shall not be liable for any injury, loss, death, inconvenience, delay or damage to personal property in connection with or resulting from acts of God, illness, disease, acts of war, riot, civil unrest, insurrection or revolt, flood, cyclone, hurricane, fire, earthquake or other natural occurrence, weather event or disaster, animals, strikes or other labor activities, criminal or terrorist activities of any kind, overbooking or downgrading of services, food poisoning, mechanical or other failure of aircraft, vessels or other means of transportation, termination or cancellation of services by suppliers for any reason or for failure of timely arrival or departure.

Other. Dates, program details and costs, although given in good faith and based on tariffs, exchange rates and other information current at the time of printing, are subject to change at any time. While we do not anticipate material revisions of the itinerary or its included features, we do reserve the right to substitute accommodations or modes of transportation and to make any changes in the itinerary Orbridge, in its sole discretion, deems necessary and in that case any additional expense or cost will be paid by the individual guest. Your baggage and personal effects are your sole responsibility at all times. There are many inherent risks in travel, which can lead to illness, injury, or even death. These risks are increased by the fact that some of our programs take place in remote locations, far from medical facilities. You acknowledge and agree to assume all such risks associated with participating in this program.

Orbridge may at any time and without notice modify these terms and conditions, and any modification so made will be effective for all reservations made from and after the posted Effective Date.

In the event any term in these terms and conditions is deemed unenforceable by a court of competent jurisdiction, the unenforceable clause shall be interpreted to give effect to the parties' intentions to the greatest enforceable extent, and all other provisions hereof shall remain fully enforceable according to their terms.

Acceptance of Contract. ANY PAYMENT TO ORBRIDGE, INCLUDING BUT NOT LIMITED TO DEPOSITS, CONSTITUTES YOUR ACKNOWLEDGEMENT OF AND AGREEMENT TO THE TERMS AND CONDITIONS SET FORTH ABOVE AND IN MORE SPECIFIC TOUR DOCUMENTS.

© 2014 ORBRIDGE LLC. All rights reserved. ORBRIDGE, ORBRIDGE DESTINATION SPECIALISTS, ORBRIDGE GROUP, and OBR are service marks of Orbridge LLC. The service marks and trademarks of any supplier appearing in these materials are owned by each respective company. WAST# 602828994; CAST# 2098750-40